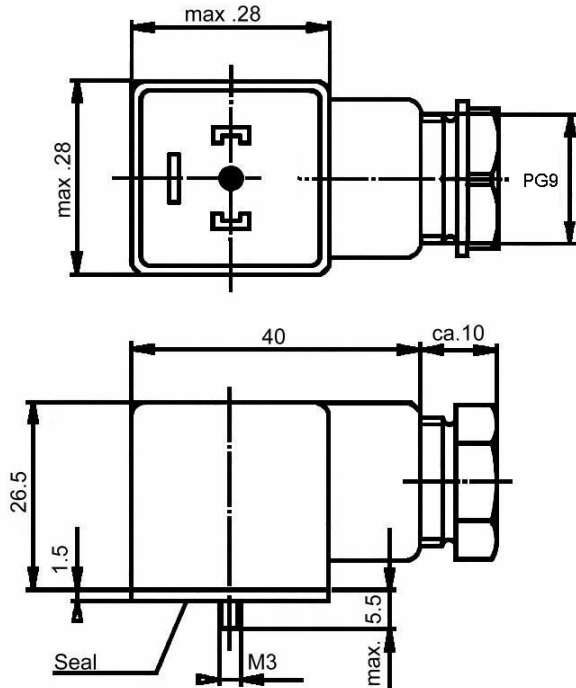




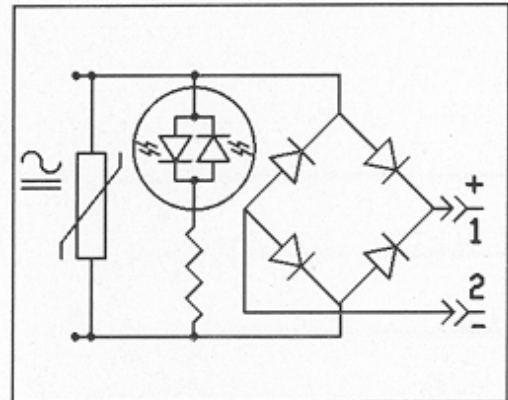
2291-3361 Strain Relief Connector With Full Wave Bridge Rectifier 24V LED & Surge Varistor



STRAIN RELIEF (translucent housing)



Full Wave Bridge Rectifier Circuit



Number of Poles = 2+GRD

Contact Spacing: 18mm

Input Voltage: 24 VAC

Max. Current: 3 AMP

Contact Resistance: 4 Ohm

Housing Material: Polyamide Nylon Glass Reinforced

PG9 Strain Relief for cords ranging 0.240 to 0.310 in.

Protection Class: IP 65

Insulation Class: VDE 0110-1/89

Operating Temperature: -40 C to +125 C with Silicon Seal

Buna Profile gasket standard

Conforms to:

DIN 43650-A

ISO 4400

EN 175301-803

&

RoHS Compliant